

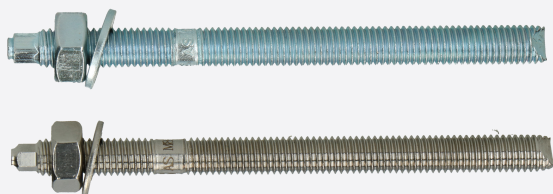
SMOOSAS



THREADED ROD FOR CHEMICAL ANCHORS

Threaded rod supplied together with nut and washer.

TYPE AS



ADVANTAGES

- Setting tool in each packaging.
- With chamfered point 2x45°.

FUNCTIONING

- When installed in hollow bricks, only in combination with perforated sleeves.

ANKERSTANG MET SLUITRING EN MOER

VOORDELEN

- Bijgeleverd hulpstuk voor eenvoudige montage.
- Met afgeschuinde punt van 2x45°.

TOEPASSING

- Bij gebruik in holle steen, enkel in combinatie met geperforeerde zeefhuls.

TIGE FILETÉE AVEC RONDELLE ET ÉCROU

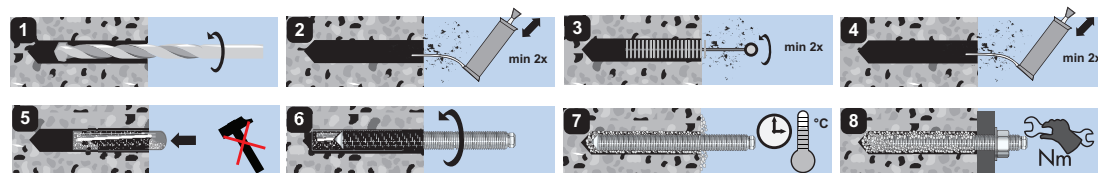
AVANTAGES

- Outil de pose dans chaque boîte.
- Pointe de 2x45°.

APPLICATION

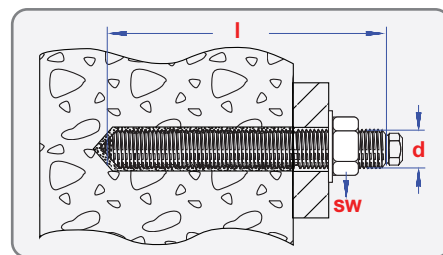
- Lors du montage dans des briques creuses, à utiliser avec des tamis perforés.

INSTALLATION SCHEME



INFO

d [mm]	l [mm]	SW [mm]
M8	110	13
M10	130	17
M12	160	19
M16	190	24
M20	260	30
M24	300	36



Carton box packing - Kartonverpakking - Boîte carton

size	pgb code	EAN13	
M 8x110	SM00AS0010801103	5902134723716	10
M 10x130	SM00AS0011001303	5902134723723	10
M 12x160	SM00AS0011201603	5902134723730	10
M 16x190	SM00AS0011601903	5902134723747	10
M 20x260	SM00AS0012002603	5902134723754	6
M 24x300	SM00AS0012403003	5902134723761	6



Carton box packing - Kartonverpakking - Boîte carton

size	pgb code	EAN13	
M 8x110	SM00ASB000801103	5902134725574	10
M 10x130	SM00ASB001001303	5902134725581	10
M 12x160	SM00ASB001201603	5902134725598	10
M 16x190	SM00ASB001601903	5902134725604	10
M 20x260	SM00ASB002002603	5902134725611	6
M 24x300	SM00ASB002403003	5902134725628	6

Other sizes available upon request.

Andere afmetingen beschikbaar op aanvraag.

Autres dimensions disponibles sur demande.